

# Bucket Elevator

## Process

The Van Aarsen bucket elevators have been designed for vertical transport of a wide range of products, used in the feed milling and premix industries, with different bulk densities. The Van Aarsen bucket elevators are equipped with some of today's most innovative features for maximum efficiency, performance, and ease of operation.

## Benefits and Features

### High effectiveness

- ▶ The elevator head is full radius contoured to improve material discharge flow
- ▶ Control of belt alignment and speed monitoring devices for maximum efficiency during operation. Mounted on both the pulling and non-pulling part of the belt.
- ▶ Rubbered pulley to increase belt grip

### Low maintenance costs

- ▶ For easy interior accessibility, the elevator head consists of 3 pieces
- ▶ Service doors, located on the head section, provide convenient access
- ▶ The elevator head is full radius contoured to minimize wear
- ▶ An exchangeable manganese wearing plate is placed in the elevator head
- ▶ A belt torsion protection device prevents belt torsion and elevator damage
- ▶ Fat resistant belt (option)

### Easy and safe operation

- ▶ All motors on elevators have a anti-return mode when elevator is stopped
- ▶ All moving parts are shielded for the safety of operating personnel
- ▶ Pressure relief panels can be located on the hood (option)



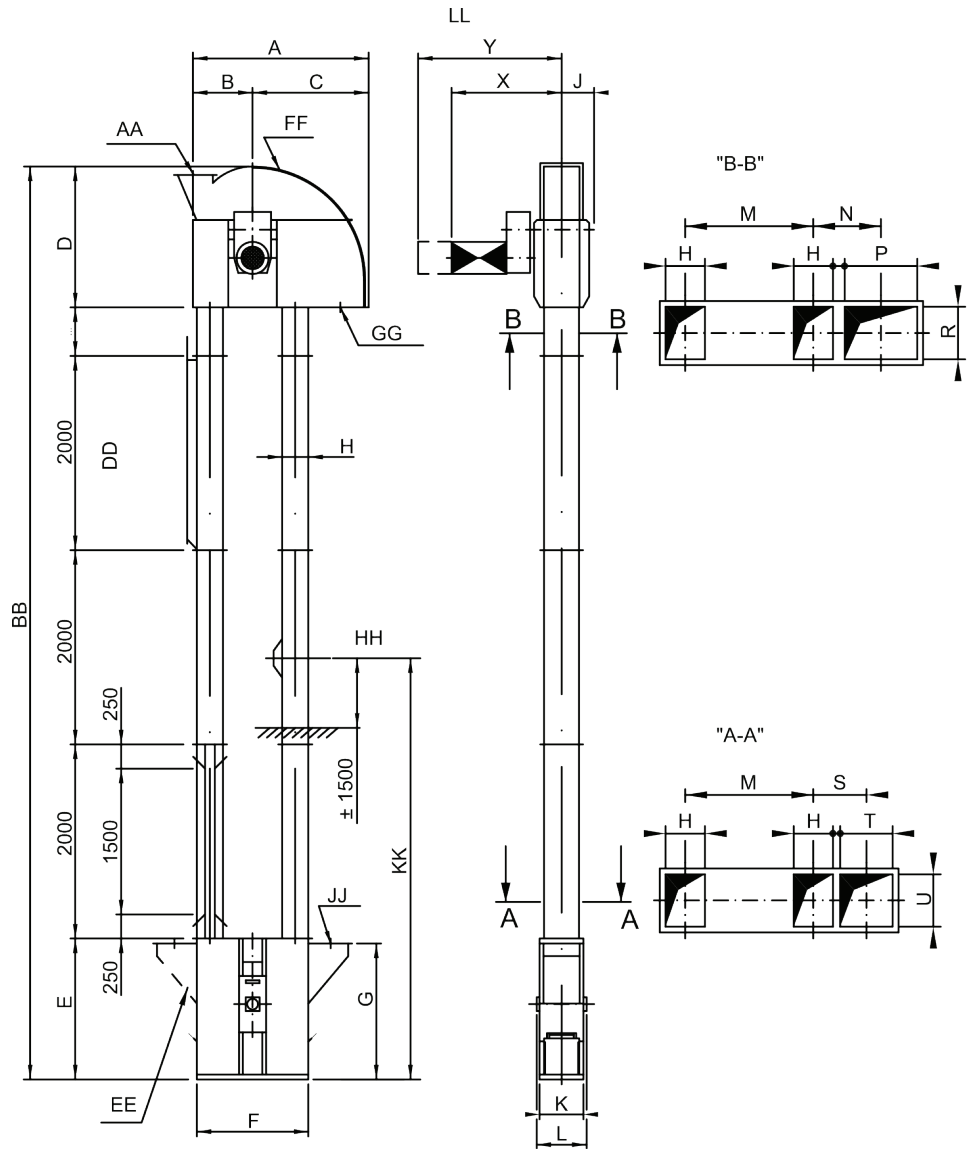
### Hygienic production

- ▶ Plastic buckets for hygienic operation with sticky products (option)
- ▶ A belt-tensioning device with threaded rods is mounted on the elevator foot. For more complete emptying, with less remainder and hygienic operation, an adjustable anti-contamination bottom can be chosen (option)
- ▶ Machined shaft and flange seals prevent potential openings for dust emission
- ▶ To avoid dust emission during loading and discharging an individual filter unit can be placed on the elevator (option). Filter size is dependent on product flow through the elevator. A wide range of compact dust filters provides the right selection.

### Design

- ▶ Available in a range of 4 types; varying from 180x180 to 400x550.
- ▶ Heavy-duty, double row spherical-roller bearing and flanged bearing units, mounted externally
- ▶ Standard painted
- ▶ Galvanized surface treatment for in and/or outdoor placement (option)
- ▶ Designed and constructed according to CE and ATEX safety regulations





**Legend:**

- AA** Explosion preparation
- BB** Total height
- DD** Pipe for dust filter
- EE** Only for pellets
- FF** Wear plate
- GG** Outlet
- HH** Torsion prevention
- JJ** Inlet
- KK** ± 1/2 height (applicable according to table below)
- LL** Maintenance space

Type	*	A	B	C	D	E	F	G	H	J
180x180	1	1100	375	725	1065	800	688	750	180	225
260x260	1	1590	555	1035	1250	1250	1030	1200	260	265
260x260	2	1590	555	1035	1250	1250	1030	1200	260	265
270x360	1	1810	615	1195	1450	1450	1150	1400	270	335
270x360	2	1810	615	1195	1450	1450	1150	1400	270	355
400x550	1	2250	775	1475	1800	1950	1450	1900	400	465
400x550	2	2250	775	1475	1800	1950	1450	1900	400	465

Type	*	K	L	M	N	P	R	S	T	U
180x180	1	250	320	500	315	250	180	230	160	160
260x260	1	340	400	770	410	400	260	310	260	260
260x260	2	370	580	770	410	400	260	310	260	260
270x360	1	440	500	880	465	500	360	365	360	360
270x360	2	470	680	880	465	500	360	365	360	360
400x550	1	650	728	1050	600	600	550	600	500	500
400x550	2	660	870	1050	600	600	550	600	500	500

\* 1= Foot with tensioning device  
 \* 2= Foot with tensioning device and adjustable bottom